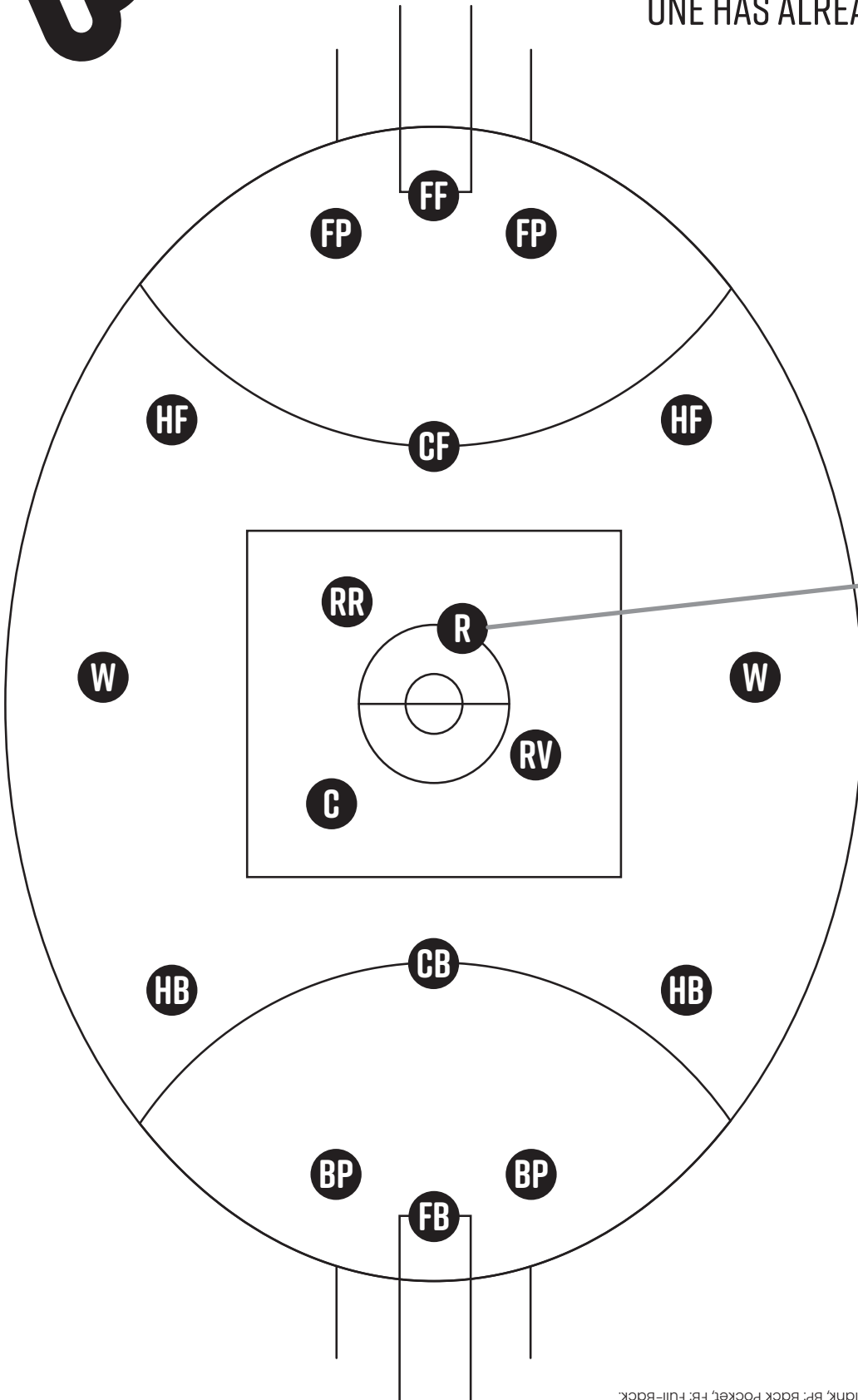


What's that position?



MATCH EACH FOOTBALL POSITION WITH THE CORRECT POSITION ON THE FIELD. ONE HAS ALREADY BEEN DONE FOR YOU.



FORWARDS

CENTRE HALF-FORWARD

HALF-FORWARD FLANK

FORWARD POCKET

FULL-FORWARD

MIDFIELDERS

RUCK

CENTRE

RUCK-ROVER

ROVER

WING

FULLBACKS

CENTRE HALF-BACK

HALF-BACK FLANK

BACK POCKET

FULL-BACK

WHAT'S THAT POSITION? ANSWERS
 FORWARDS: CF: Centre Half-Forward, HF: Half-Forward Flank, FP: Forward Pocket, FF: Full-Forward;
 MIDFIELDERS: R: Ruck, C: Centre, RR: Ruck-Rover, RV: Rover, W: Wing;
 FULLBACKS: CB: Centre Half-Back, HB: Half-Back Flank, BP: Back Pocket, FB: Full-Back